



# ePipe™ ML-IP Concentrator

*Multi-link IP access concentrator for Linux®*

## enhance the reliability, security and speed of connections

The ePipe ML-IP Concentrator is multilink gateway software that resides on a Linux system. ePipe ML-IP Concentrator works in conjunction with ePipe ML-IP appliances to enhance the reliability, security and bandwidth of your data network between each of your locations; place ePipe ML-IP Concentrator in your head office and ePipe ML-IP appliances in your branches (from anywhere between 2 and 100 locations). Insert ePipe ML-IP Concentrator into existing infrastructure with no changes and use the services that suit your needs at each office location, to build a more affordable, flexible, reliable and secure network.

## a faster, more flexible connection

ML-IP Concentrator enables you to increase bandwidth to match your rapidly increasing networking needs, on demand. Simply add extra low-cost connections as needed at each location to achieve virtual high speed links at a fraction of the cost of single high speed connections. ePipe lets you build the bandwidth you need by aggregating up to 4 xDSL, Cable, T1 or Frame Relay connections (as well as an additional 4 PSTN or ISDN failover connections) into one faster connection. ML-IP Concentrator achieves this transparently, without intervention by service providers.

ML-IP Concentrator can aggregate connections through any IP-enabled network, including private IP networks, public IP networks (Internet), Frame Relay or ATM. This allows multi-site organizations to enjoy scalable broadband data services at every site today, regardless of the services that are locally available.

## a more secure connection

ML-IP Concentrator is fully compatible with your existing security solution. In addition, The ML-IP software enhances the security of your connections, by fragmenting packets across multiple links (and even multiple networks, if you wish).

Separate, isolated LAN segments (DMZ) can be established for hosting Web, email and e-commerce services, controlling access to these services from both the Internet and internal users.

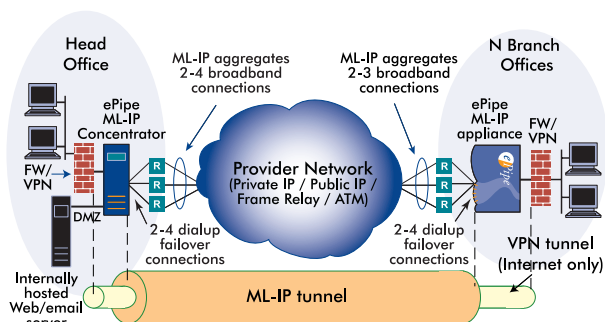
## a more reliable network

ML-IP Concentrator's advanced link management gives you peace of mind that your network will keep transferring data, even if a link or provider service fails. ML-IP Concentrator aggregates multiple connections, instead of risking each location to a single fast connection. Because ML-IP Concentrator utilizes all the circuits available, you enjoy all the bandwidth you purchase, instead of wasting money on redundant circuits that are idle most of the time.

ML-IP Concentrator is provider transparent, allowing you to simultaneously network through multiple service providers and be protected in the event of a provider-wide failure. Even if you lose all broadband services, ML-IP Concentrator automatically switches to multiple backup PSTN or ISDN connections, giving you a bullet-proof network.

## faster Internet access

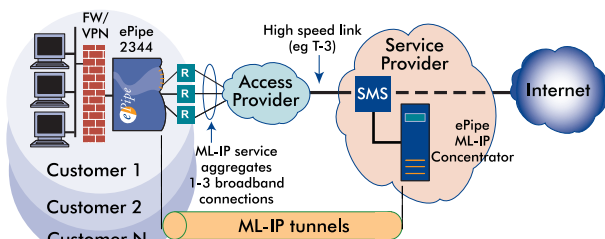
ML-IP Concentrator also load balances Internet traffic (outbound requests) across multiple connections. It balances http, images, streaming audio, video, email, ftp and other Internet session traffic across all available connections. This enables everyone in the organization to enjoy faster Internet access.



### Scenario 1: Site to Site IP VPN

A fully bonded high bandwidth solution between customer sites:

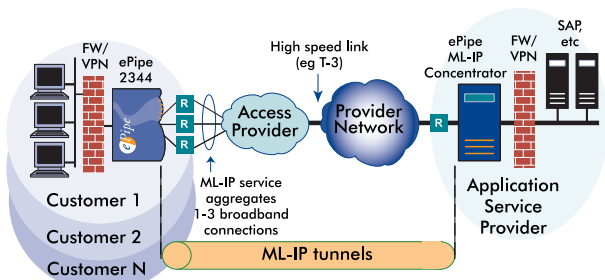
- ♦ Faster network transfers, reduced latency
- ♦ More reliable connections ensure network stays live
- ♦ Compatible with all VPN solutions and with a wide range of provider networks (Private IP, Public IP, etc)



### Scenario 2: Internet Service Providers

A fully bonded high bandwidth solution from ISP to customer site:

- ♦ Faster access to customer Web site
- ♦ Faster Internet access and e-commerce
- ♦ More reliable Internet, e-commerce access



### Scenario 3: Application Service Providers

A fully bonded solution from ASP to customer site:

- ♦ More advanced, high bandwidth solutions
- ♦ Reliability to ensure customer access to applications
- ♦ More responsive application performance, more users

## Complete Bandwidth Management

- ♦ Up to 4 times as reliable as a single connection
- ♦ Enhanced link security, assured compatibility
- ♦ Up to 4 times the speed of your current connection
- ♦ Works over any link type (DSL/T1/cable/dial)
- ♦ Compatible with any IP-enabled network, including private IP networks, public IP networks (Internet), leased lines, Frame, ATM
- ♦ Load-balance Internet access (outbound requests)
- ♦ Affordably bridges bandwidth gaps in provider services

#### The Americas (USA)

Tel: +1 800 347-7722 (toll free)  
Tel: +1 831 477 4345  
Fax: +1 831 477 0444

#### Asia Pacific (Australia)

Tel: 1800 037 473 (toll free, Australia)  
Tel: +61 7 3377 7242  
Fax: +61 7 3377 7245

#### Internet

<http://www.ml-ip.com/epipe/>  
[info@ml-ip.com](mailto:info@ml-ip.com)



The Leaders in  
Multilink IP

## Technical Specifications

### Multilink IP Bandwidth Aggregation and Management

Protocols	TCP/IP, RIP, DHCP, TFTP, PPP, PPPoE
Bandwidth control (site-site)	Multilink IP (ML-IP) aggregates connections into a site to site tunnel
High availability	All active links aggregate data (no idle links) Automatic fallback to fewer broadband links for resiliency Broadband fail-over to up to 4 bonded dial backup links
Carrier access service	xDSL, Leased Line, or Cable (up to 4 links) ISDN, PSTN or wireless (up to 4 links)
Primary access ports	Supports 4 xDSL or leased line routers, xDSL bridges
Backup access ports	Supports 4 analog modems, ISDN TAs
Operating System supported	Red Hat Linux 7.2
Networks supported	Any IP-enabled network (Private, Public, Frame Relay, ATM)
Compatibility	Works with all CPE VPN and firewall solutions
Bandwidth control (Internet)	Load-balances Internet sessions (outbound requests) over available links

### Monitoring and Configuration

Configuration	Simple browser based tool
Monitoring	Discovery on local network; network and communications statistics; hardware status

Product	Description	Rec. System Configuration
ePipe ML-IPC-10	Terminates 10 ML-IP tunnels	800MHz Celeron, 256MB RAM
ePipe ML-IPC-50	Terminates 50 ML-IP tunnels	1.4GHz P4, 256MB RAM
ePipe ML-IPC-100	Terminates 100 ML-IP tunnels	2 GHz P4, 256MB RAM*

\* ePipe ML-IPC-100 requires 64-bit PCI Ethernet cards